

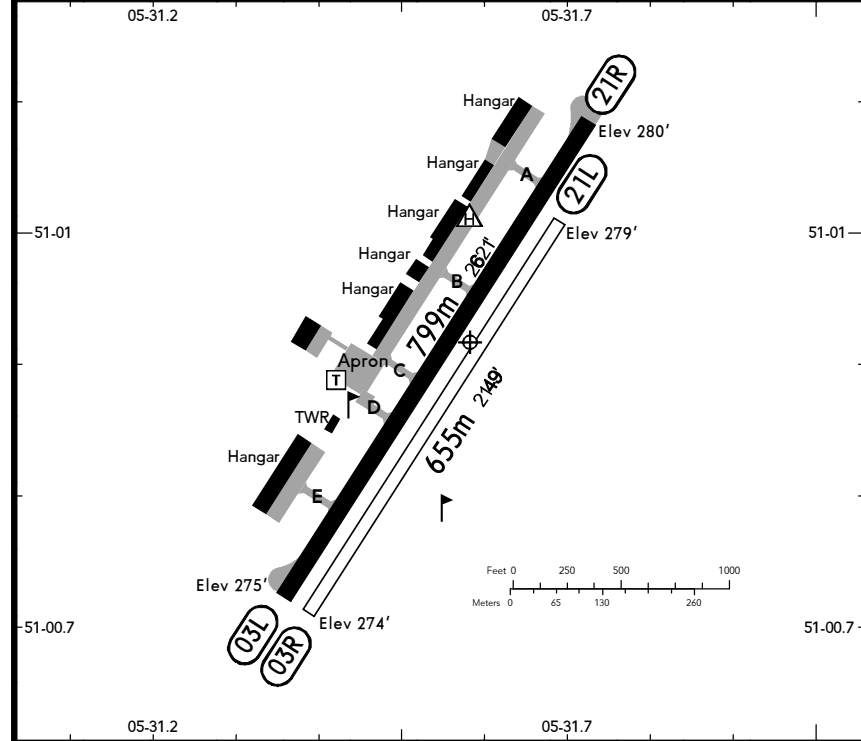
EBZW
ZWARTBERG

28 MAR 25 (19-2)

GENK
BELGIUM

LOCATION Elev 270' /82m N51 00.9 E005 31.6	GENK RADIO 120.405 ⁽¹⁾ (en)	ADMITTED AIRCRAFT
--	--	-----------------------

⁽¹⁾ Info only, no ATC.



RWY No	Dimension (m) - Surface	TORA (m)	LDA (m)	Strength	Lights
03L 21R	799 x 23 Asphalt	799	799	10t	---
03R 21L	655 x 18 Grass	655	655	3.5t	---

1 Only for home-based pilots.

CAUTION: Parachuting activity at Nieuwe Kempen (a circle with radius of 1 NM centred at N51 02.21 E005 31.36), FL 150, Sat, Sun & Hol, SR-SS. The area should never be overflown.

Radio controlled model ACFT on AD.
Jet ACFT operations not allowed.
RH traffic circuit RWY 03.

Pay attention to the EB-R 05 A, north of AD.
Intensive glider flying on Sat, Sun & Hol.
Occasionally paradrop on the AD. Check NOTAMs thoroughly.

Entry points into the TFC circuit for paradrop OPS only, at or above 3000':

- RWY 21R: NOVEMBER (warehouses at the beginning of base);
- RWY 03L: WHISKEY (railway-motorway crossing) or ECHO (motorway interchange).

Due to noise abatement adhere strictly to the traffic circuit.

EBZW
ZWARTBERG

28 MAR 25 (19-1)

GENK
BELGIUM

LOCATION Elev 270' /82m N51 00.9 E005 31.6	FIS BELGA INFORMATION 129.325 ⁽¹⁾ BRUSSELS INFORMATION 126.900 ⁽²⁾
--	--

AIRSPACE
KLEINE-BROGEL APPROACH 134.480⁽³⁾ GENK RADIO 120.405⁽⁴⁾ (en)

⁽¹⁾ MIL ⁽²⁾ CIV ⁽³⁾ Kleine Brogel TMA ⁽⁴⁾ Info only, no ATC.

