

EBZW

Elev **278'**/85m

N51 00.9

E005 31.6

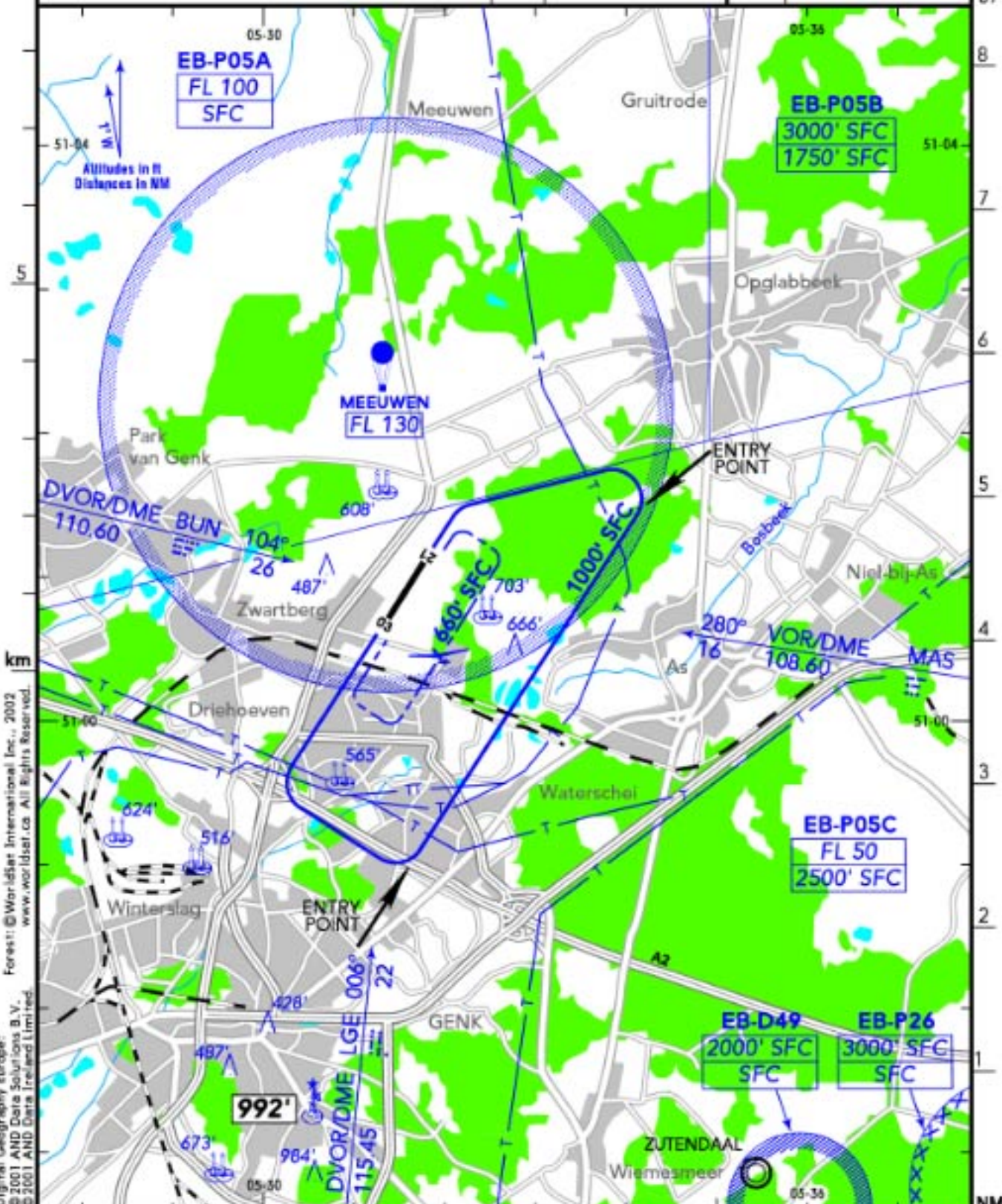
3.4 NM N Genk

(AFIS)

GENK RADIO **120.40**

RWY	ILS	RWY	ILS

SCALE 1:100 000



km
 Digital Geography Europe
 © 2001 AND Data Solutions B.V.
 © 2001 AND Data Ireland Limited
 Forest: © Worldair International Inc., 2002
 www.worldair.ca. All Rights Reserved.

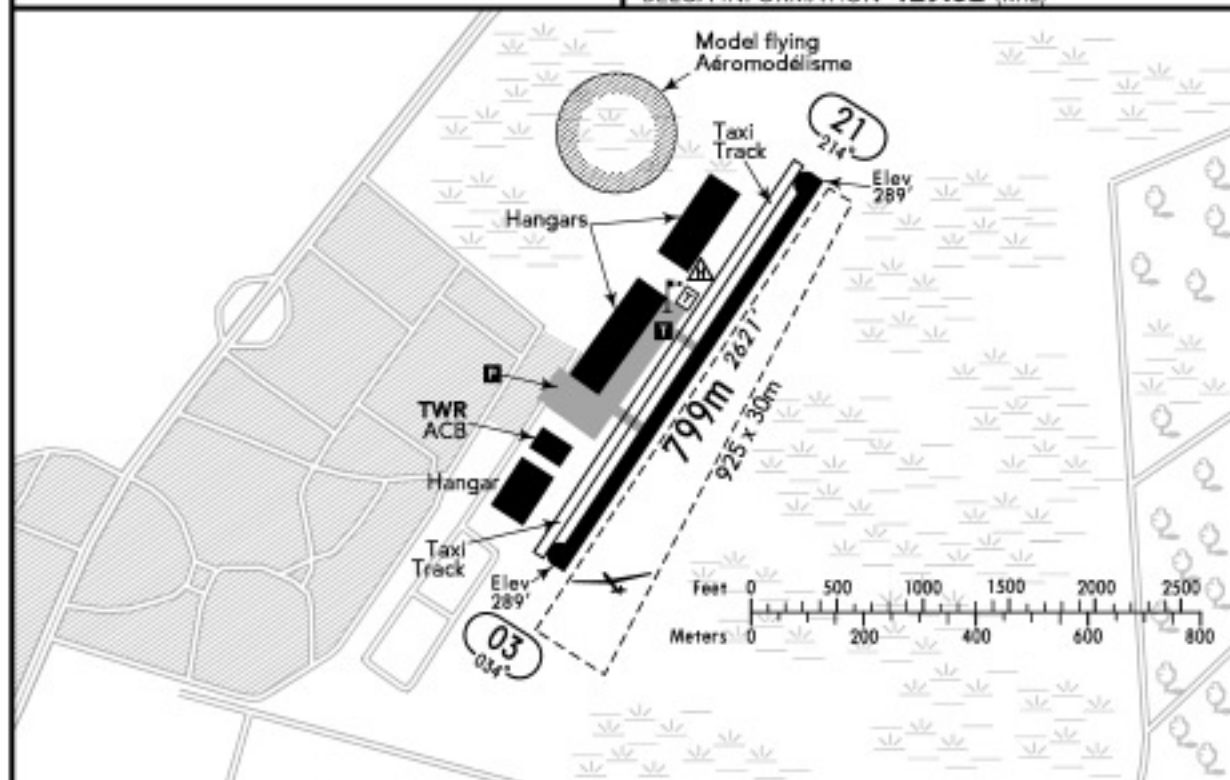
GENK
ZWARTBERG
BELGIUM

19-2 8 SEP 06

JEPPESEN



(FIS)
 BRUSSELS INFORMATION **126.90**
 BELGA INFORMATION **129.32** (MIL)



RWY No	Dimension (m) - Surface	TORA (m)	LDA (m)	Strength	Lights
03 21	799 x 23 Asphalt	799	799	10t MPW	—

Pay attention to the EB-P05A N of AD.

Intensive glider flying on Sat, Sun & Hol.

Parachuting at MEEUWEN, FL 130,
 Sat, Sun & Hol, SR-SS.

Due to noise abatement adhere strictly to the
 traffic circuit.

L'attention de EB-P05A au N de AD.

Forte activité de planeurs Sat, Sun & Hol.

Parachutages à MEEUWEN, FL 130,
 Sat, Sun & Hol, SR-SS.

Pour des raisons anti-bruit, suivre strictement le
 circuit en vol.